

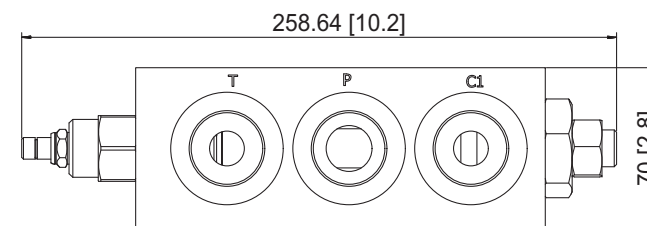
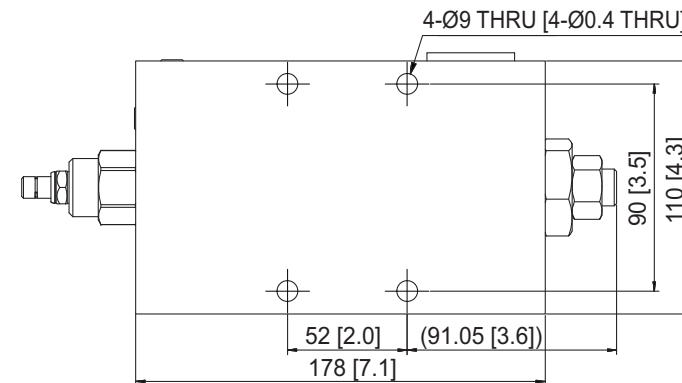
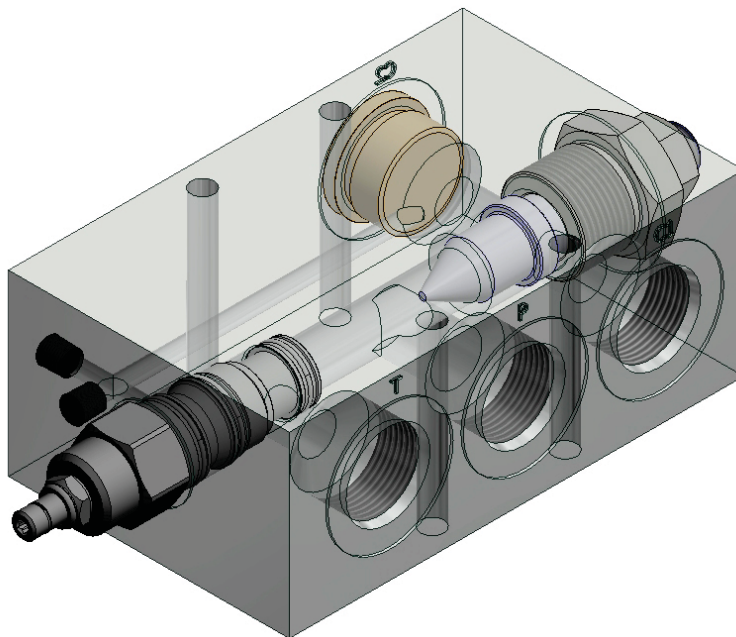
# MFV FLOW CONTROL VALVE

## PRESSURE COMPENSATED FLOW CONTROL VALVE

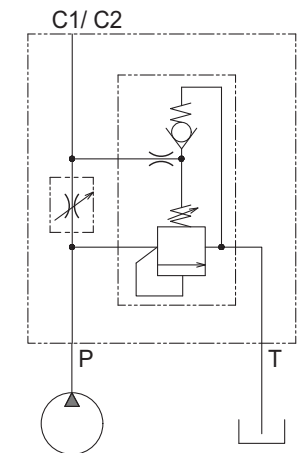
- Pressure Compensated Flow Control Valve with Built-in Relief Valve
- Screw In Style Adjustable Orifice
- Aluminum Body or Ductile Cast Body

Model	Port	Adjustable Pressure Range		Max Inlet Flow		Max Controlled Flow@ Max Inlet Flow	
		bar	psi	lpm	gpm	lpm	gpm
MFV12B-N	SAE ORB -12	5 ~ 210	70 ~ 3,000	130	34	90	23
MFV16B-N	SAE ORB -16			200	52	120	31
MFV20B-N	SAE ORB -20			300	77	140	36

AUTHORIZED DEALER



[MFV16B-N]



P : Pressure  
T : Tank  
C1/ C2 : Controlled Flow