

# MCV FLOW CONTROL VALVE

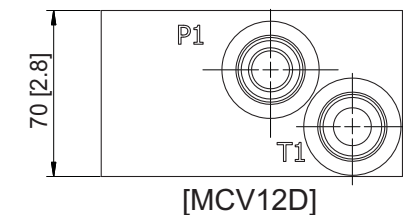
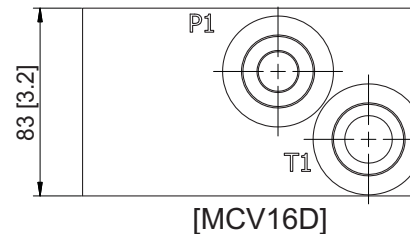
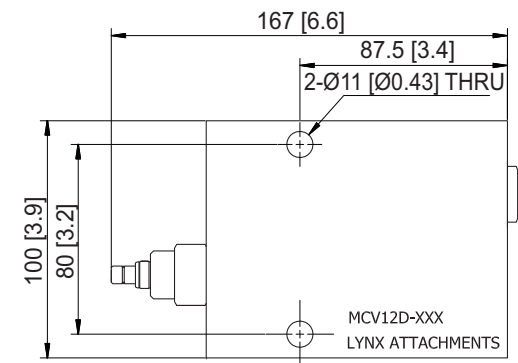
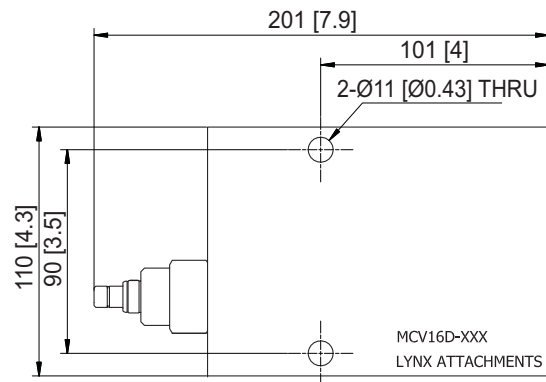
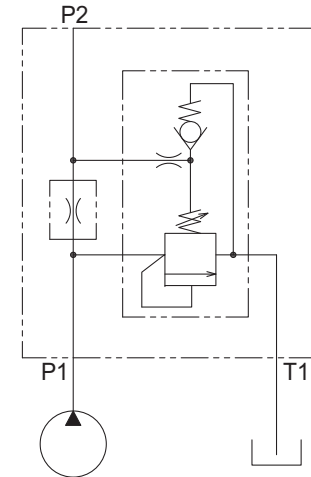
## PRESSURE COMPENSATED FLOW CONTROL VALVE WITH BUILT-IN PRESSURE RELIEF VALVE

- Screw-in Fixed Orifice.
- Aluminum Body or Ductile Cast Body.

Model	Port	Adjustable Pressure Range*		Controlled Flow		Max Inlet Flow	
		bar	psi	lpm	gpm	lpm	gpm
MCV12B-034	SAE ORB -12	5 ~ 350	70 ~ 5,000	34	9	74	19
MCV12B-067				67	17	105	27
MCV16B-087	SAE ORB -16			87	23	130	33
MCV16B-108				108	28	190	48
MCV16B-173				173	45	250	65

\* Aluminum Body up to 210 bar (3,000psi)

P1 : Pressure  
T1 : Tank  
P2 : Controlled Flow



AUTHORIZED DEALER