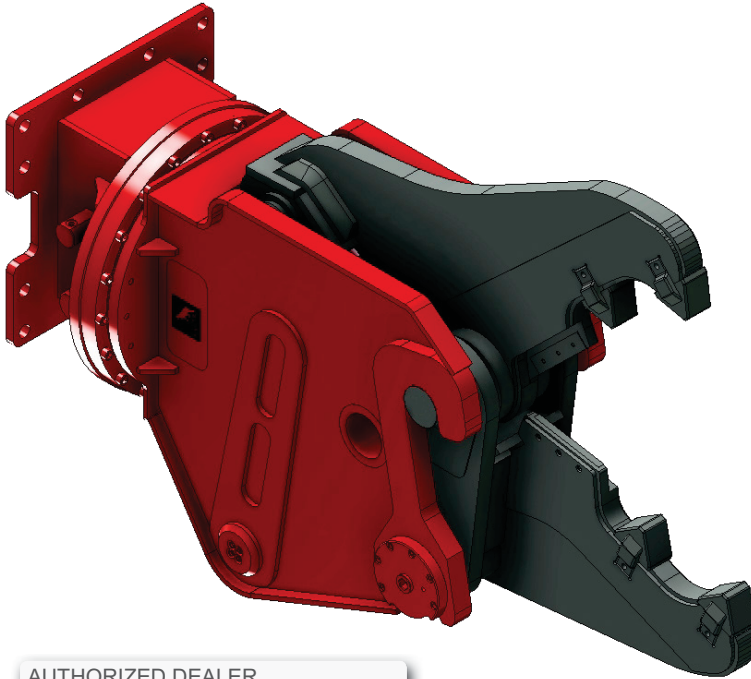


DEMOLITION MULTI PROCESSORS TMC

With versatile quick change jaw and tooth design, TCM provides the simple but powerful tool for demolition and recycling contractors.

- Minimized flow stress to the carrier.
- Maximixed serviceability.
- Trouble-free spool type speed valve reduce cycle time.
- Heavy duty bolt-on gland cylinder.
- Field replaceable teeth with secured lock system.



AUTHORIZED DEALER

Model	Unit	TMC25R	Unit	TMC25R
Carrier Weight	M/T	18~30	M/T	18~30
Weight with C Jaw	kg	2,465	lb	5,420
Weight with P Jaw		2,590		5,700
Weight with S Jaw		2,300		5,060
Crusher Jaw [C Jaw]	mm	Opening	inch	810
		Depth		770
		Blade Length		240
Pulverizer Jaw [P Jaw]	mm	Opening	inch	860
		Depth		250
		Blade Length		190
Shear Jaw [S Jaw]	mm	Opening	inch	470
		Depth		675
		Weight		kg
Crushing Force, C Jaw	M/T	Mid	lb	133
		Tip		89
Crushing Force, P Jaw	(Metric Ton)	Mid	(X1000)	107
		Tip		78
Shearing Force, S Jaw	M/T	Apex	lb	199
		Tip		109
Rated Pressure	bar	320	psi	4,600
Rated Oil Flow	lpm	280	gpm	74
Hyd. Rotation	Pressure	bar	psi	2,500
	Oil Flow	lpm	gpm	8~12
	Speed	RPM	RPM	10~15
Cycle time	sec	Open	sec	2.2
		Close		1.9

Specifications subject to change without notice.

- R model comes with continuous 360degree hydraulic rotation.
- Height Dim. : Flat top mounting. Measured jaw fully closed.
- Cycle time : Measured at rated flow under no load.

