

DEMOLITION MULTI PROCESSORS TC-V

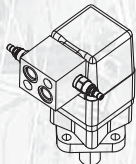
With crusher or pulverizer jaw, the TC-V is the best solution for concrete, hard rock, and rebar processing.

Unlike hydraulic breakers, the TC-V processors provide noise-free and vibration-free solution to any demolition project.

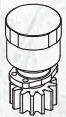
Large model selection is available for most carriers.

Dual Cylinder Dual Pin design provides

- Wide opening and tremendous initial crushing force, and optimized angle of attack.
- Asymmetric design and independent cylinder movement minimize the stress to the carrier.



360° hydraulic rotation motor equipment with dual relief valve



[Optional rotation brake]
Self centered jaws by eliminating rotation circuit in lieu of hydraulic rotation motor.



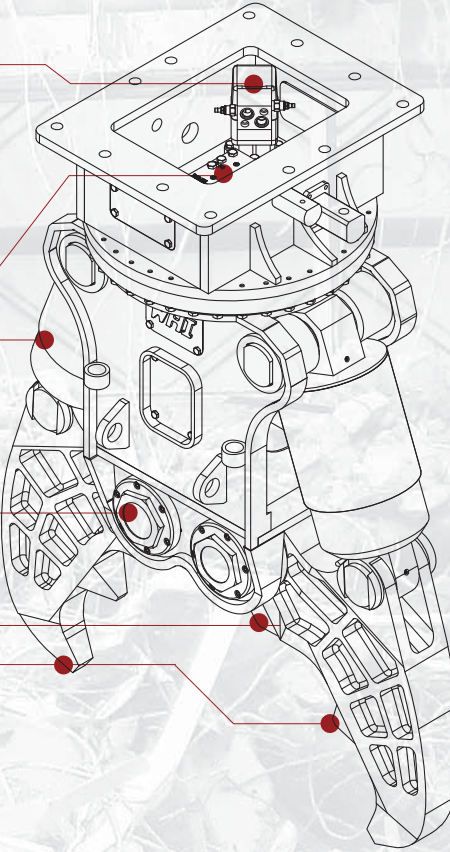
Speed valve reduces cycle time, and its oversized design eliminates over flow issues.

Heavy duty Cylinder guard

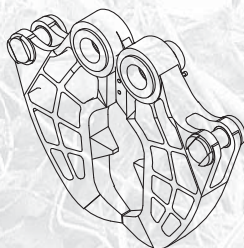
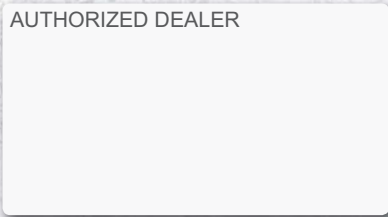
Oversized hardened pin and bushing design

Replaceable four way turnable blades

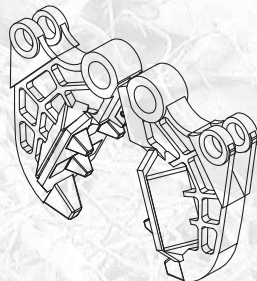
Wedge shaped jaw penetrate reinforced concrete and hard rocks



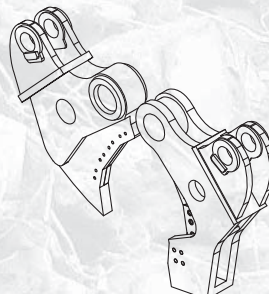
AUTHORIZED DEALER



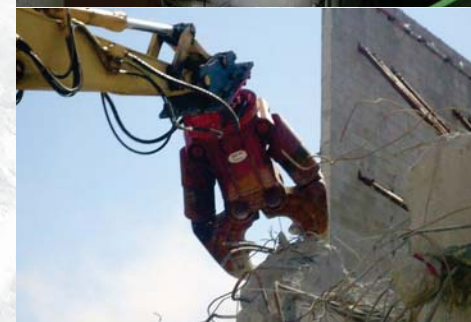
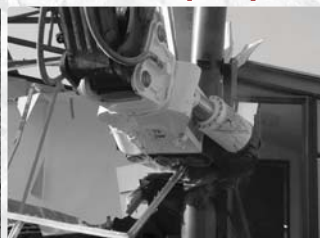
Crusher Jaw [CW Jaw]



Pulverizer Jaw [PW Jaw]

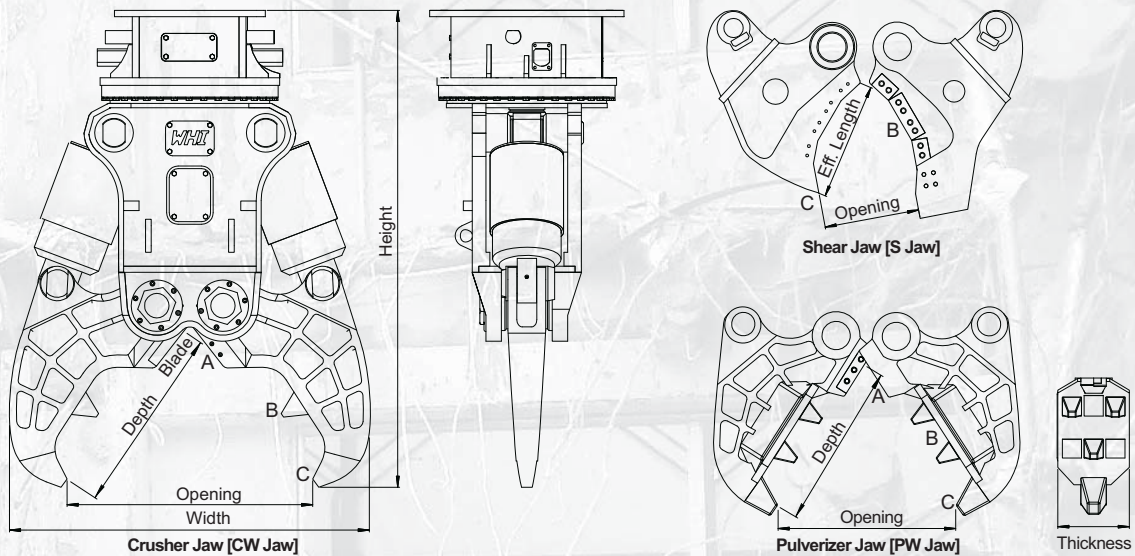


Shear Jaw [S Jaw]



DEMOLITION

MULTI PROCESSORS TC-V



Model	Unit	TC 15(R)V	TC 25(R)V	TC 30(R)V	TC 45(R)V	Unit	TC 15(R)V	TC 25(R)V	TC 30(R)V	TC 45(R)V	
Carrier Weight	M/T	13~20	20~40	29~45	45~65	M/T	13~20	20~40	29~45	45~65	
Weight with CW Jaw	kg	1,365	2,100	2,750	5,350	lb	3,000	4,620	6,050	11,770	
Weight with P Jaw		1,332	2,220	2,910	5,610		2,930	4,880	6,400	12,340	
Weight with S Jaw		1,347	2,010	2,875	5,960		2,960	4,420	6,330	13,110	
Crusher Dimensions [CW Jaw]	Height	2,030	2,180	2,450	2,850	inch	80	86	96	112	
	Width	1,250	1,450	1,720	2,350		49	57	68	93	
	Opening	805	980	1,100	1,400		32	39	43	55	
	Depth	610	820	945	1,100		24	32	37	43	
	Blade Length	140	220	250	250		6	9	10	10	
Pulverizer Dimensions [PW Jaw]	Height	1,620	2,280	2,450	2,850	inch	64	90	96	112	
	Width	1,120	1,450	1,720	2,350		44	57	68	93	
	Opening	750	980	1,080	1,400		30	39	43	55	
	Thickness	250	340	370	415		10	13	15	16	
	Blade Length	140	220	250	250		6	9	10	10	
Shear Dimensions [S Jaw]	Height	1,650	2,150	2,280	2,840	inch	65	85	90	112	
	Width	1,050	1,450	1,640	1,820		41	57	65	72	
	Opening	390	514	520	820		15	20	20	32	
	Depth	415	545	595	955		16	21	23	38	
	Eff. Length	354	450	470	780		14	18	19	31	
Cutting Force [A, Throat]	M/T (Metric Ton)	526	1,141	1,729	2,558	lb (X1000)	1,157	2,510	3,804	5,627	
Crushing Force [CW / PW Jaw]		[B] Middle	128	254	326		482	281	558	718	1,061
		[C] Tip	82	143	180		266	181	314	396	586
Shearing Force [S Jaw]		[B] Apex	243	381	507		588	535	839	1,116	1,294
		[C] Tip	104	188	231		273	229	413	508	600
Rated Pressure	bar	320				psi	4,600				
Rated Oil Flow	lpm	210	280	280	390	gpm	55	74	74	103	
Hyd. Rotation	Pressure	210				psi	3,000				
	Oil Flow	lpm	28~32	32~45	32~45	75~105	gpm	7~8	8~12	8~12	20~27
	Speed	RPM	10~15				RPM	10~15			
Cycle time	Open	sec	1.5	2.5	3.2	4.2	sec	1.5	2.5	3.2	4.2
	Close	sec	1.4	2.3	3.8	5.4	sec	1.4	2.3	3.8	5.4

Specifications subject to change without notice.

- R model comes with continuous 360degree hydraulic rotation.
- Height Dim. : Flat top mounting. Measured jaw fully closed.

- Width Dim. : Measured jaw wide open.
- Cutting Force [A] : At rebar blade center
- Cycle time : Measured at rated flow under no load.